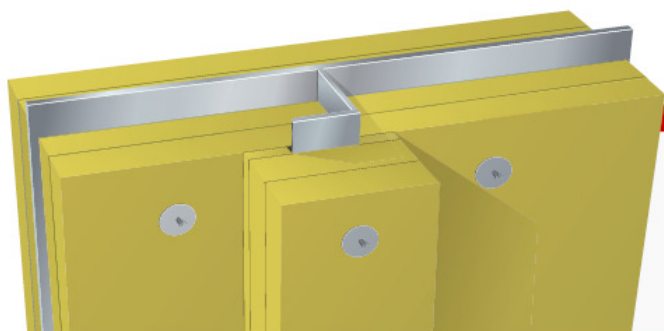


A-60 Aluminium Bulkhead



MED B-4190

Product: Rockwool Marine Firebatts 130
Density: 130 kg/m³
Thickness: Plate 2x30 insulation on both sides
 Stiffener 2x30 mm

Construction:




- Plate between stiffeners insulated with two layers of 30 mm Rockwool Marine Firebatts 130. Insulation on both sides of the alu plate.
- Stiffeners insulated with two layers of min. 30 mm Rockwool Marine Firebatts 130.
- Standard alu plate min. 6 mm (± 0.5 mm) thick.
- Stiffeners 9 mm alu.
- ø3 mm alu tipped stainless steel pins fixed with approx 300 mm distance.
- Insulation secured with stainless steel washers of ø38 mm.

Application notes:

- All the connections must be tight, no air gaps.
- Gap under the stiffener must be filled out completely.
- Joints must be staggered, 150 mm overlap is recommended

- The pins should exceed the insulation by approx 10 mm.

Advantages:

-  **Safe solution**
-  **Optimal sound properties**
-  **Easy handling**

Surfaces:

- Reinforced aluminium foil
- Glass cloth

Sound:

- Weighted sound absorption
 Marine Firebatts 130, 2x30 mm $\alpha_w=0.90$

