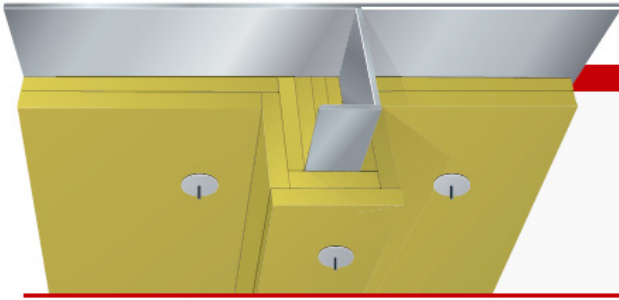


# A-60 Aluminium Deck



## MED B-4187

- Product:** Rockwool Marine Firebatts 130  
**Density:** 130 kg/m<sup>3</sup>  
**Thickness:** Plate 2x30 mm insulation  
 Stiffener 2x30 mm insulation




### Construction:

- Plate between stiffeners insulated with two layers of 30 mm Rockwool Marine Firebatts 130.
- Stiffeners insulated with two layers of min. 30 mm Rockwool Marine Firebatts 130.
- Standard alu plate min. 6 mm ( $\pm 0.5$  mm) thick.
- Stiffeners 9 mm alu.
- $\varnothing 3$  mm alu tipped stainless steel pins fixed with approx 300/400 mm distance.
- Insulation secured with stainless steel washers of  $\varnothing 38$  mm.

### Application notes:

- All the connections must be tight, no air gaps.
- Gap under the stiffener must be filled out completely.
- Joints must be staggered, 150 mm overlap is recommended
- The pins should exceed the insulation by approx 10 mm.

### Advantages:

-  **Safe solution**
-  **Optimal sound properties**
-  **Easy handling**

### Surfaces:

- Reinforced aluminium foil
- Glass cloth

### Sound:

- Weighted sound absorption  
 Marine Firebatts 130, 2x30 mm  $\alpha_w = 0.90$

