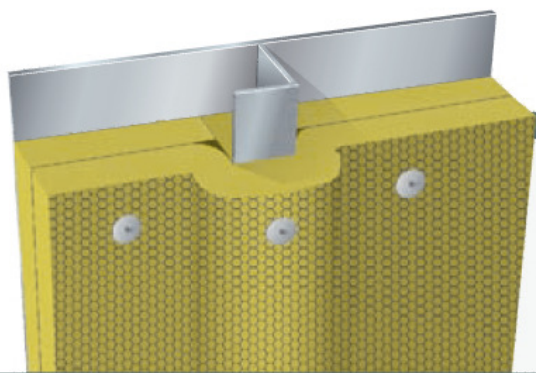


H-60 Steel Bulkhead restricted



- Product:** Rockwool HC Firebatts 150
Rockwool HC Wired Mat 150
- Density:** 150 kg/m³
- Thickness:** Plate: 30 mm + 40 mm insulation
Stiffener: 40 mm insulation

Construction:

- Plate insulated with one layer of 30 mm Rockwool HC Firebatts 150 and one layer of 40 mm Rockwool HC Wired Mat 150.
- Stiffeners insulated in the same process with min. 40 mm of Rockwool HC Wired Mat 150.
- Standard steel plate 4.5 mm (± 0.5 mm) thick.
- $\varnothing 3$ mm pins fixed with approx 300 mm distance.
- Insulation secured by washers of $\varnothing 38$ mm.

Application notes:

- Restricted application (fire against insulated side)
- All the connections must be tight, no air gaps.
- Gap under the stiffener must be filled out completely.
- Joints between layers must be staggered, 150 mm overlap is recommended.
- The pins should exceed the insulation by approx 10 mm.
- Wire mesh must be twisted together at joints.

- Insulation can be placed on either side of the steel plate.

Advantages:



Safe solution



Optimal sound properties



Fast installation

Surfaces:

- Reinforced aluminium foil

