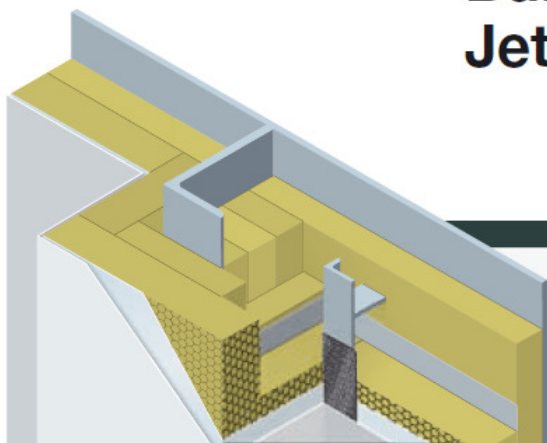


Bulkhead and Deck Jet Fire 30 min.



Product: Rockwool HC Firebatts 150
Density: 150 kg/m³
Thickness: Plate: 85 mm (35+50 mm) insulation

Construction:

- Plate and stiffener must be insulated with 35 mm and 50 mm Rockwool HC Firebatts 150. First layer, 35 mm, with reinforced aluminium foil. The foil must be placed so it is between the two layers of insulation.
- Standard steel plate 5 mm.
- Standard pins or stainless steel pins $\varnothing 3$ mm.
- Insulation secured with washers of $\varnothing 38$ mm.
- Insulation secured with galvanised wire mesh.
- Wire mesh must be covered with reinforced aluminium foil.
- The construction must be covered with 0.8-1.0 mm stainless steel plate.
- All joints in the stainless steel plate must be against a back-up steel angle 40x20x4 mm, covered with ceramic paper.
- Stainless steel plate fixed with self-tapping screws at 150 mm c/c.

For further details check official drawing.

Application notes:

- Joints between the two layers of Rockwool HC Firebatts 150 must be staggered, 150 mm overlap is recommended.
- Wire mesh clamped or twisted at joints
- Pins must be bent over the fixing washers
- Test duration 30 min.

Advantages:



Safe solution

