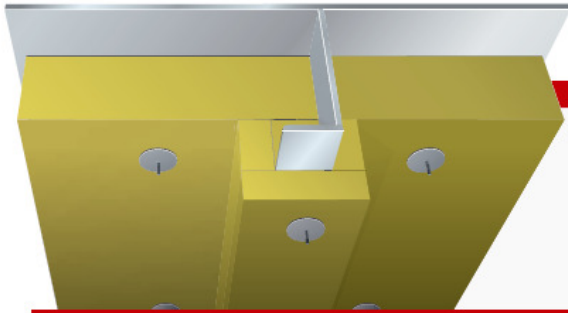


# A-60 Steel Deck



**MED B-4189**

**Product:** Rockwool Marine Firebatts 100

**Density:** 100 kg/m<sup>3</sup>

**Thickness:** Plate 40 mm insulation  
Stiffener 25 mm insulation

## Construction:

- Plate between stiffeners insulated with one layer of 40 mm Rockwool Marine Firebatts 100.
- Stiffeners insulated with min. 25 mm Rockwool Marine Firebatts 100.
- Standard steel plate 4.5 mm ( $\pm 0.5$  mm) thick.
- $\varnothing 3$  mm pins fixed with approx 250 mm distance.
- Insulation secured with washers of  $\varnothing 38$  mm.

## Application notes:

- All the connections must be tight, no air gaps.
- Gap under the stiffener must be filled out completely.
- The pins should exceed the insulation by approx 10 mm.

## Advantages:



**One layer solution**



**Low construction weight**



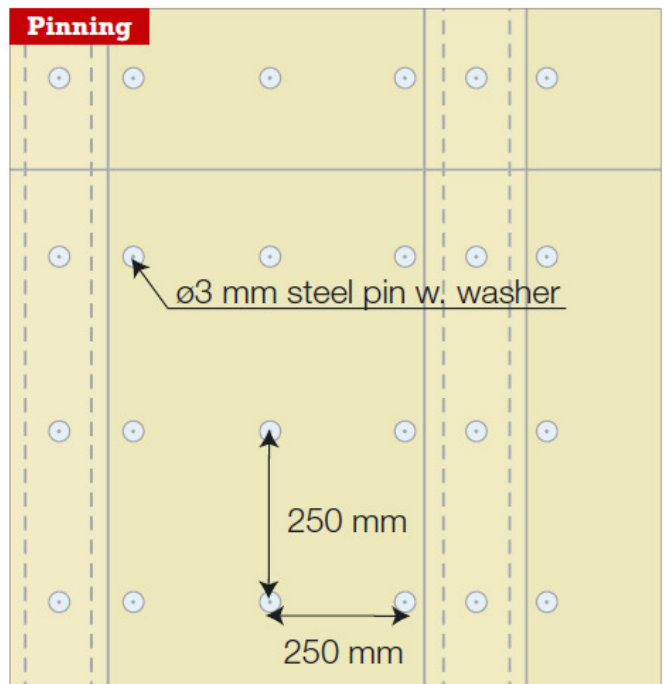
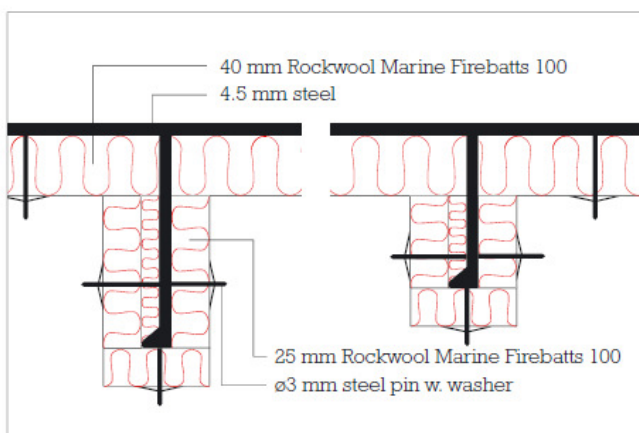
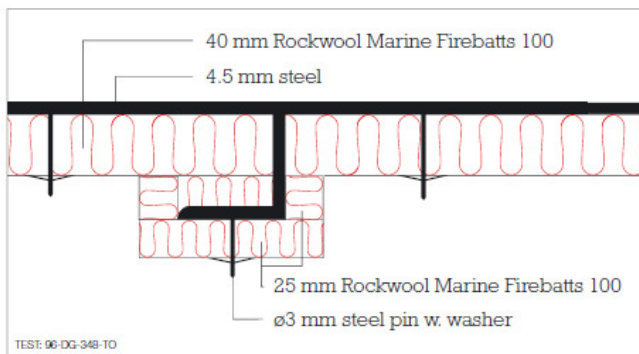
**Easy handling**

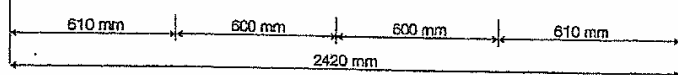
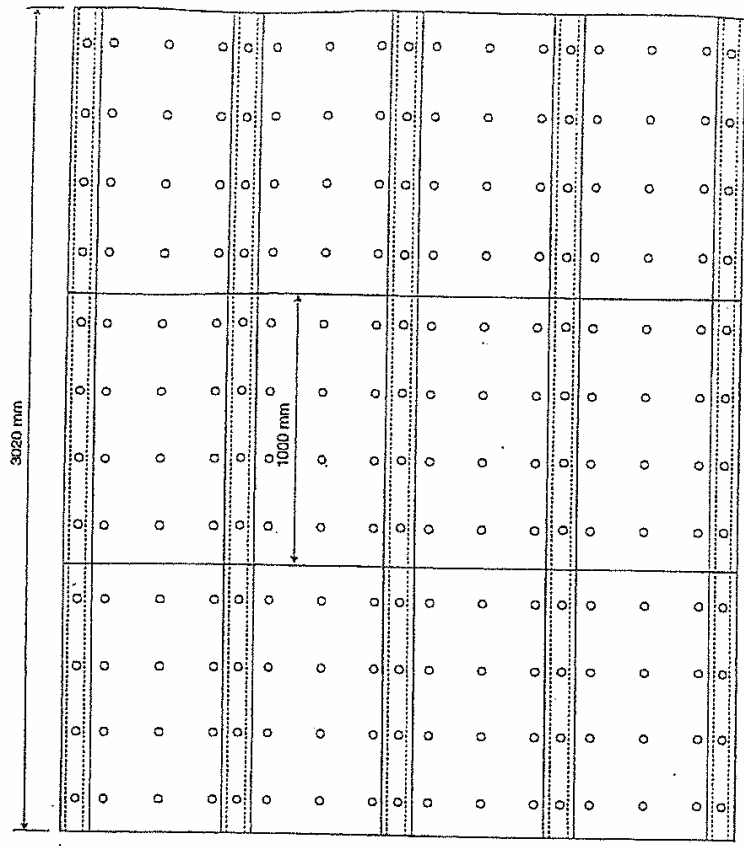
## Surfaces:

- Reinforced aluminium foil
- Glass cloth

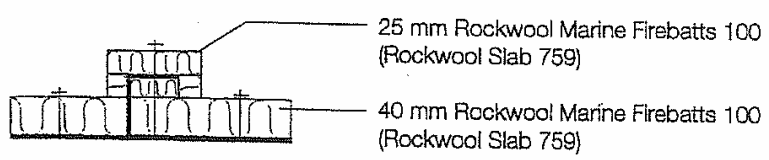
## Sound:

- Weighted sound absorption  
Marine Firebatts 100, 40 mm  $\alpha_w = 0.80$





Pins placed with approx. 250 mm space



Representation in Question

A-60 Deck

28.12.2004

Date: 2004.25.08	A-60 Deck with Rockwool Marine Firebatts 100 (Rockwool Slab 759)	<b>ROCKWOOL®</b> Rockwool A/S
Drawing: EJ NO:04-03		
Scale 1:20		

