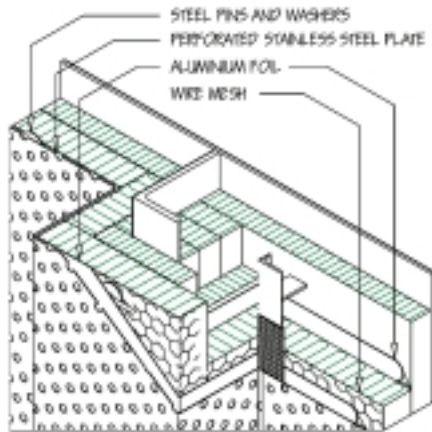


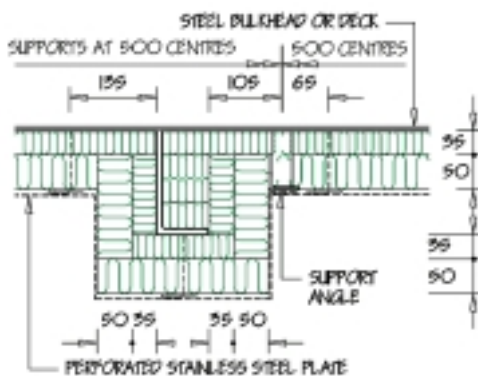
General arrangement



Acoustic construction - 30 minutes

- Location: Bulkhead or deck.
- Test duration: 30 minutes.
- Plate thickness: 5mm minimum.
- Jet fire attack: Insulated side.
- Insulation: **Rockwool Firebatt 150**
85mm (50 + 35mm).
- Aluminium foil: 0.05mm - reinforced.
- Wire mesh: Galvanised wire mesh grade No. 22.
- Steel pins: Carbon or stainless \varnothing 3mm.
- Steel washers: Carbon or stainless \varnothing 35mm
- Cover plate: 0.8 - 1mm perforated stainless steel.
- Screws: Bortex RFL45, 5.5x45 or equal.

Sectional view



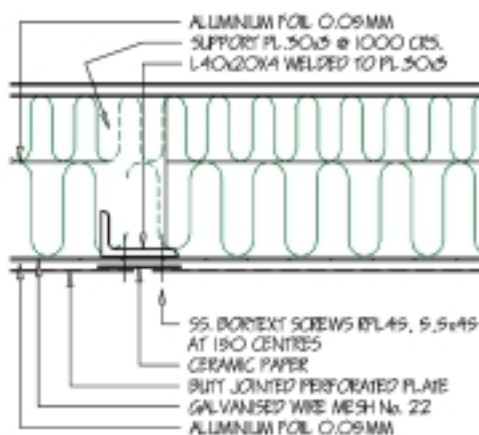
Applications:

- Steel bulkheads
- Steel decks

Application notes:

- Joints between the two layers of Firebatt 150 to be staggered.
- Wire mesh stitched at joints.
- Steel pins must be bent over the fixing washers.
- Aluminium foil to be taped over pins and washers.

Detail of support angle



Note:

- Insulation build-up must be as follows:
 1. 35mm **Rockwool Firebatt 150**.
 2. 0.05mm reinforced aluminium foil.
 3. 50 mm **Rockwool Firebatt 150**.
 4. Galvanised wire mesh No. 22.
 5. 0.05mm reinforced aluminium foil.
 6. Ceramic paper (over L40x20x4)
 7. Butt jointed stainless steel perforated plate fixed with self-tapping screws at 150 centres.

Pinning:

- See section 4.55.1 for pinning arrangement.